



# *Bulletin*

*Number 68 1997*

*New Zealand Founders Society Inc.*



The Pioneer Monument in New Plymouth (see page 33)

## CONTENTS

Notice of Annual General Meeting	3
President's Report	4
Branch Reports	7
Annual Financial Statement	23
Obituary, Ewan Hay-Mackenzie	27
A Founders' Record?	28
Notes from Waikato	29
List of National Presidents	31
Historic Chair	32
Taranaki Founders Day	33
Whanganui's 50th Anniversary	35
1863 Letter	37
Captain James Bruce	38
Passenger Shipping Lists	40
An 1886 Visit to Rotorua	41
New Members	45
National Council and Branch Secretaries	48

\*\*\*\*\*

### MESSAGE FROM THE EDITOR

I have been looking through the Sigma Report and found a number of suggestions about the Bulletin, some of which had actually been implemented before the Report. However there seems to be some confusion about the purpose of the Bulletin. It is not a newsletter. It is an annual summary of the activities of the Society and the Executive Committee through the President's Report, the Financial Statement and the Branch Reports. When space is available, articles of historical interest are included. Of course the Society could issue a larger or more frequent Bulletin, but that would double the cost of printing which is about \$1,500 a year. Are members willing to bear that cost? If more information about the work of the Executive Committee is required, members should approach their Branch Secretary who regularly receives the minutes of the Committee's monthly meetings.

The Bulletin is what you, as members, make it. As I have always stressed, contributions, in the form of suggestions, letters, articles or photographs are welcome at any time of the year. Thank-you to everyone who sent a contribution for this Bulletin.

Joyce Mackenzie, 23 Balgownie Ave, Wanganui.

## NOTICE OF ANNUAL GENERAL MEETING

NOTICE IS HEREBY GIVEN that the fifty-eighth Annual General Meeting of the New Zealand Founders Society Inc. will be held at the Portland Towers Hotel, 24 Hawkestone Street, Wellington, on Monday, 30th June 1997 at 5.30 pm.

### BUSINESS

1. Confirmation of Minutes of last Annual General Meeting
2. Adoption of Annual Report
3. Adoption of Annual Accounts
4. Election of Officers:
  - National President
  - Deputy National President
  - Executive Committee
5. Appointment of Auditor
6. Research Award
7. General Business

The meeting will be followed by a Guest Speaker and a social function.

For and on behalf of the National Council

P O Box 10-290, Wellington  
May 1997

Janet Robinson  
National Secretary

\*\*\*\*\*

### STATUS OF MEMBERS

	<u>1994</u>	<u>1995</u>	<u>1996</u>	<u>1997</u>
Honorary	210	220	256	257
Life	68	67	66	62
Senior	1084	1067	953	914
Junior	7	4	4	2
Associate	159	144	127	108
Hon. Associate	3	2	-	-
Hon. for Service	16	23	22	24
	<hr/>	<hr/>	<hr/>	<hr/>
	1547	1527	1428	1367

THE FIFTY-EIGHTH ANNUAL REPORT OF THE NATIONAL PRESIDENT  
OF THE NEW ZEALAND FOUNDERS SOCIETY

I am pleased to report on activities for the year ended 31st March 1997. I must, however, begin with an apology. Successive surgical operations kept me out of action for a larger part of the year and meant my wife and I could not visit as many branches as intended and also limited attendance at branch functions. I am most grateful to Ray Greville, National Vice President, for the able way he stepped into the breach.

For all that, it has been an active year with a major preoccupation to plan and develop appropriate strategies for the future, including what could be necessary to achieve the ongoing viability of the Society and how to extend and promote its image and influence within the community.

The total of investments is down, reflecting the payment to the Inland Revenue of the GST claim, although we managed to avoid any penalty. There was also the payment to the "Sigma" report which, because it was agreed to at the 1995 Council Meeting on the basis of being an expenditure of capital, has been deducted from accumulated funds in this year's accounts. The amount received from the Trust Bank shares was an offset.

The cash position is reasonably healthy currently but it may be difficult to avoid deficits of expenditure over income in future years. Accrued interest has been brought into the accounts for the first time to present a more factual position.

Branch responses to the "Sigma" report are in the process of collation and evaluation.

The books in the library have now been re-catalogued and lists sent to branches. The more important will be valued and we are grateful that through the good offices of Mrs Greville a number of valuable books from I.C.I. New Zealand Ltd have been added, although we do not have complete ownership. We need to be on goingly grateful to Nancy McDonald and Annette Fairweather for the long hours of dedicated effort they have put in. It is to be hoped that in future much greater use will be made of the great asset the library represents.

There was an allocation from the Research Annual Trust this year and encouragingly several applications of good merit. The fact that awards are available seems to have become better known. Two previous awards have yet to get final payment.

Membership as at 31 March 1997 stood at 1367 as against 1,428 in 1996, made up as follows:-

	<u>1994</u>	<u>1995</u>	<u>1996</u>	<u>1997</u>
Auckland	157	124	104	104
Bay of Plenty	116	117	113	116
Canterbury	40	51	42	48
Hawkes Bay	327	292	263	247
Northland	59	43	40	37
Poverty Bay	46	50	46	45
Taranaki	125	119	108	98
Waikato	123	124	125	113
Wairarapa	157	189	171	160
Whanganui	102	108	119	127
Wellington	<u>286</u>	<u>310</u>	<u>297</u>	<u>280</u>
	<u>1547</u>	<u>1527</u>	<u>1428</u>	<u>1367</u>

It remains vital to stem the decline in membership and develop strategies to achieve this. As Branches will know we are looking at new categories of membership but there needs to be also a well-structured public relations programme beyond that. It is interesting that following a Radio Pacific programme on the Founders Society, a number of branches reported an inflow of new members. The lessons stemming from this should be taken on board.

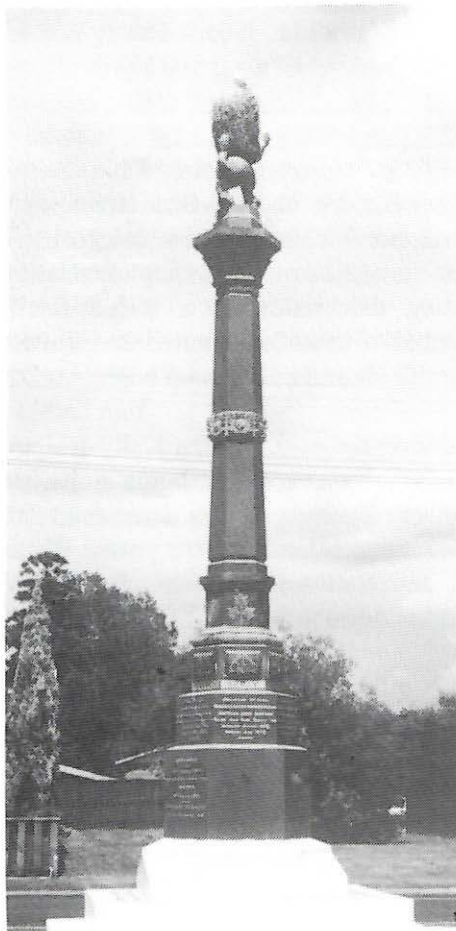
Again there are many to thank for work during the year. Helen Kelly resigned recently. She obtained an offer of a part-time job nearer to her home and which suited her situation better as a working mother. She was always dedicated to the Founders Society and made many friends among members over the years. We are sorry to see her go. Janet Robinson is the new National Secretary. She is most pleasant and obliging and I am sure will readily develop a rapport with branches.

The Executive Committee has worked most effectively but it is regrettable that Ron Greenwood, whose health has not been good, has tendered his resignation as from the Annual General Meeting. Ron, a past National President, has had a very long association with the Society and the Executive Committee. In a number of ways he has contributed greatly to the New Zealand community and is very widely respected and honoured. His good judgment and advice will be greatly missed.

Joyce Mackenzie remains very much a key figure in the Society with the publication of the "Bulletin" and the liaison and rapport she has with branches and members. She has a wonderful background knowledge of early European settlement and Joyce's enthusiasm is infectious and her dedication outstanding.

I will be standing down as National President. The health problems I have had, although the forward prognosis is reasonably good, means it would be irresponsible to continue. It has been a great privilege to have served for two years and my wife and I have enjoyed meeting a number of members. The Society has a most worthwhile message to promote.

\*\*\*\*\*



This is the Pioneer Monument in Waipu (Northland) which commemorates the Scottish settlers who emigrated first to Nova Scotia on the east coast of Canada and then to New Zealand, under the leadership of Rev. Norman McLeod.

The hexagonal part of the monument has the names and details of the seven immigrant ships and a representation of each. They were:-

Margaret

Highland Lass

Passengers from these two went first to Adelaide and Melbourne in 1852 and then came on to N. Z. on the

Gazelle 18 September 1853

The later ships were:-

Gertrude 25 December 1856

Spray 29 June 1857

Breadalbane 21 May 1858

Ellen Lewis May 1860.

Photo, Joyce Mackenzie

A great-granddaughter of one of these settlers spoke about Waipu at a Northland Branch meeting last year.

## BRANCH REPORTS

### AUCKLAND

Closure of our usual venue for extensive renovations lasting 18 months, meant Auckland Branch needed to relocate within the inner city, since the vast nature of our region precludes suburban meetings. We were fortunate to find historic Kinder House in Parnell fits the bill admirably and we have enjoyed numerous happy gatherings in this delightful house set in a beautiful garden.

Guest speakers have included Diana Marsters, co-author of a wonderful book about the history of the Auckland School of Nursing and Diana provided us with many fascinating and amusing anecdotes concerning days gone by and some early medical and nursing staff. Enlarged copies of old photographs enabled us to see the uniforms and buildings of an other era when nursing was more reliant on skill and care than wonder drugs and technology.

Another treat was a talk by one of our members, Miss Joan Herdman, who lived in England for many years. Miss Herdman discussed English sources for genealogical research which was of interest to folk tracing their family tree.

Our chairman, John Webster told us on another occasion about St Stephens Anglican graveyard in Parnell, a fascinating topic leading to a discussion about some of the information. The second half of his talk about "Life on the Tip" described how he fossicked in the Takapuna tip as a youth and his finds whetted his appetite for history. Once he found a picture of great value which he eventually donated in person to the Maritime Museum at Greenwich. The curators were delighted as the picture completed a set.

We next made a visit to the Auckland War Memorial Museum to view the kiwiana exhibition, which was full of weird and wonderful things made or painted by New Zealanders, none of whom are famous. After lunch together in the cafe, some of us visited the winter gardens as well.

Auckland waterfront is home to the Maritime Museum which offers great value for money to the visitor. Life-sized replicas of a fully furnished beach store, bach, shipping office, whaling station and the interior of a steamship cabin offered a trip down memory lane. Imagine being able to sit inside a sailing ship on the very beds your ancestors slept in and feel the vessel rocking. This is what we experienced. Then there were craft from all over the Pacific, modern yachts, paintings, memorabilia from the shipping lines and river boat services,

figure heads, model ships and even a ride on a scow in the harbour if desired.

Khyber Pass has been home to breweries for over 130 years and members paid a visit in winter to Lion Brewery which stands on land which was once occupied by the Captain Cook Brewery. Our hostess showed a video about the history of brewing, and then led us on a tour of the enormous premises. Hops adorning a wall perfumed a room where we learned how beer is now produced by modern technology. Then we were taken to the stables to meet the huge Shire horses which are still used to transport beer to some city hotels and for special occasions. Finally we retired to the "Lions Den" where we were treated to a drink.

Other outings have included lunch at the revolving restaurant, and a visit to the rare book room at the Auckland Library and the Art Gallery. For our Christmas party the cake was baked by Miss Olive Pratt who is a committee member and a nonagenarian. Christmas was also the time when we honoured some of our long standing members especially Miss Dawn Schultz, another committee member who has belonged to Founders for more than 40 years. Auckland Branch is alive and well and a move forced upon us has been beneficial in the long run.

Carolyn Rhodes, Branch Secretary/Treasurer.

\*\*\*\*\*

### **BAY OF PLENTY**

I am happy to state that we have regained our membership numbers, a rewarding increase from last year.

The AGM in February was held at the Talisman Hotel Katikati, where members enjoyed luncheon and heard a talk about the history of Katikati's early European settlement given by Mrs Prestidge, a member of the local Public Relations Committee, who explained the now famous murals on the walls of the town buildings. Later our 39 members were able to view the murals

In May Mrs Alison Heath arranged luncheon at the Whakatane Hotel and the showing of a film on the early settlement of the area, including episodes in the district during the life of the Maori chief, Te Kooti.

The July luncheon was held at Rotorua Lake Plaza Hotel. Mrs Pam Terry, a widely-travelled Registered Nurse, gave an interesting account of her varied experiences in both New Zealand and overseas, including her war experience.



Fifty members attended the luncheon in September at Tauranga House in the Historic Village. These included members from Whakatane, Te Puke, Rotorua and Putaruru, as well as several new members. Mrs Rosaleen McNeilly spoke entertainingly about her work in Ireland and N.Z. as a Diversional Nurse and Therapist.

In November an early Christmas dinner and meeting was attended by 61 members at Bayfair Motor Inn at Mt Maunganui. Mr Bill Matthewson, a member whose profession has given him an intimate knowledge of our district, spoke of his early experiences in the area and of its future development as he sees it.

During the past year the Founders Creed has been read at all meetings at members' request, and to further knowledge of the Society's existence, a notice is to be placed in the N.Z. Room at the Tauranga Library. The Bay of Plenty Times now reports our meetings in its Community news columns.

I wish to thank the members of our Branch for their loyal support and attendance at meetings, not always easy in our wide-spread area, and in particular the Vice-Chairmen, Mrs Margaret Haddock and Mr Graham Etevenaux, the area representatives who have been responsible for organising the functions in their own towns. This year I relinquish the office of Branch Chairman and wish the Branch much success in the future. As for the future of the N.Z. Founders Society, it is in our hands to see that the efforts of our forebears are never forgotten.

Adelaide Armstrong, Branch Chairman

\*\*\*\*\*

### CANTERBURY-WESTLAND

Our first function for 1996 was a conducted tour of the Canterbury Brewery Heritage Centre. After viewing displays of a country pub of the last century and a cooper's workshop, we heard about the history of beer-making and toured the processes involved. We then sampled a lager or shandy before proceeding to the Pegasus Arms for lunch. This was originally the home of the first Medical Superintendent at Christchurch Hospital and later the Pegasus printing press.

A midwinter dinner in July was followed in September by Sunday lunch at the Garden Bar of the Anglers Arms in Sefton, 21 kilometres from Christchurch, with a description of and look at historical points of interest.

In early November Mr R. Harrison, a Senior Member, escorted us around the earliest burial ground in Christchurch. It contains the graves of many notable Cantabrians and we were enlightened by histories and reminiscences. This was followed by lunch at the Oxford Hotel which has served for 120 years.

For the annual Christmas dinner, three committee members and I joined the Sumner/Redcliffs Historical Society.

We planned in January to visit Akaroa to see the exhibition "Our Silver Heritage", mounted by the Wellington Museum to launch the book "Gold and Silver Smithing in 19th and 20th Century New Zealand", and also to view old-fashioned roses in the garden of Barbara Lea Taylor, author of numerous articles and a book about such roses, but this trip was cancelled because of inclement weather.

In February members enjoyed a courtesy lunch before going to view the fernery and gardens at Mona Vale, an historic property purchased for the citizens of Christchurch.

March saw members visiting the interesting Lyttelton Museum with maritime aspects and artefacts from Ernest Shackleton's expedition.

I attended the National Council meeting in Wellington and Mrs McSweeney the Historical Societies conference in Picton.

Mavis Mateer, Branch Secretary

\*\*\*\*\*

## **HAWKES BAY**

Six new members and five "Friends" have been welcomed to our Branch during the year. Unfortunately, through death and resignations, we are no longer the largest branch in the Society, but nevertheless we are a very active one.

At our AGM held in Clive Peggy Higgins, a local historian, spoke of the history of that area.

At our "meal meetings" the speakers entertained us with tales of their travels.

In April members attended a performance of "Marama", the first New Zealand composed opera, written by two local men.

A wine trail proved to be a popular winter outing.

In September we followed the Ahuriri Heritage Trail and then had lunch in the sun at the Port of Napier, followed by an interesting drive through the newly developed area of Taradale.



Photo, Nanette Roberts

Members enjoying refreshments in the grounds of "Mount Vernon", the home of Mr Peter Harding, Waipawa. Designed by Ben Smith in 1882 and built for Mr Harding's great-grandfather, it is now the home of its 6th generation family.

A weekend at "Arahina" Marton and a conducted tour of four historic homes and gardens by John Vickers in and around Wanganui was thoroughly enjoyed by 24 members.

The year ended with an enjoyable evening meal and entertainment in the gardens of Abbotslea, Waipawa and was attended by 109 members. An interesting quiz was held on the past of the district.

We are very grateful to members for arranging such enjoyable outings during the year. There is great concern that we are not attracting the younger generation as members of our Branch. The average age of our members increases each year.

Nanette Roberts, Branch Chairwoman

\*\*\*\*\*

## NORTHLAND

In March we held our AGM and several members attended the church service and luncheon arranged by the Victoria League to celebrate Commonwealth Day.

At the April meeting, as well as members bringing interesting items and talking about them, Mrs P. Courtney related the history of one of the clocks in the Clapham Clock Museum. At that time there was a scheme afoot to change the name of this museum which is known worldwide as Clapham Clocks. Our branch and some of our members individually wrote to the District Council and the newspapers against this name change. It has not been changed.

In May we again held a "Show and Tell" meeting which always generates a great deal of interest.

At the June meeting, Mrs Kay Osborne outlined the changes to our health services and also to the management of our local hospital. She was required to answer a lot of questions. Our lunch was a special one honouring our senior members and each of those present aged 80 or over received a posy made by our Chairman, Mrs Carter.



Photo Heather Kyle

A small part of the display in the Clapham Clock Museum

In July Mr David Reyburn described his great-grandfather's life in early Whangarei after he arrived in the early 1860s. Reyburn House, one of the oldest surviving houses is now used as an Arts Centre.

At the August meeting Sergeant Te Paa outlined security precautions that should be taken in the home. He stressed the need to make use of the services available through the Police authorities.

In September Mrs Carter gave a detailed report on the National Council and AGM meetings she attended in Wellington.

In October Mrs Colleen White described her time spent on the shores of Lake Victoria in Kenya as a missionary and of the shortage of food, primitive living conditions and health problems there.

At the November meeting Mrs Joan McInnes spoke about her great-grandfather who arrived in Waipu from Nova Scotia in 1856 and built the church which is still in use there. (*See photo page 6.*)

Our Christmas luncheon was held at the end of November at the Old Windsor Hotel. It was a most enjoyable day with guests from the Victoria League and the Genealogical Society.

In February after a general discussion of any activities over the holiday season, Mrs Carter spoke about her mother's books and education at Prince Albert College, Auckland in 1909.

To all who have provided the lunches and all those extra goodies, we give heartfelt thanks. I regret that this will be my last report as Chairman.

M. Carter, Branch Chairman.

\*\*\*\*\*

#### ANOTHER CHRISTMAS STORY

Edwin Hodder, on a voyage to New Zealand in 1862, had a disastrous Christmas dinner. There was a heavy gale at the time and the meat pies for the first course were not done, as the sea had come over the deck, swamping the galley and soaking the pastry with salt water. They decided to have the third course of bread and cheese first. When it came to the Christmas pudding, a heavy sea struck the ship while the pudding was being carried down the hatchway and "it came rolling down the ladder and burst into numerous fragments at our feet." After they had scraped up what they could, they discovered it was inedible, having been boiled in salt water.

## POVERTY BAY

As this is my last report as Chairman, I would like to say that during my term of office I have made many friends and visited many interesting places.

Our 1996 AGM in March was held at the Sandown Hotel where members enjoyed lunch. The meeting was well attended.

May A bus trip to Hackfalls at Tiniroto to view trees and lakes.

June A pot luck lunch at the home of Kevin and Bonnie Dwyer. Thank you both.

July Lunch at the Sandown Hotel with guest speaker Lynley Hyams who was a foundation member of Poverty Bay Branch. Her very interesting topic was early immigration to New Zealand.

August After lunch at Sandown some members went to Ormond and joined Mr Friar who conducted a walk around the village. This was a very interesting outing.

September A pot luck lunch at the home of Jim and Shirley Holdsworth followed by a happy afternoon chatting.

October Lunch at Sandown with guest speaker Conway Seymour whose subject was early Poverty Bay.

November Christmas lunch at Sandown after which we were entertained by a group of ladies, the Spectrum Singers.

February A bus trip to Matawai with lunch at the hotel which was shifted from Motu in the 1930s. Marion Gibson spoke about growing up in Matawai. There had once been many sawmills in this area. We then visited the old railway station site and the school.

It gives me great pleasure to say we have a Branch which is financially sound, despite a drop in membership. I wish all office bearers and chairman a successful 1997.

Frank Gaukrodger, Branch Chairman

\*\*\*\*\*

## TARANAKI

This, the Taranaki Branch's 41st year, was a most significant one, with Wilf Faull standing down after five years as chairman. Wilf was an original member who is not only the sole survivor of those who attended the inaugural meeting in 1956, but has served the branch on its executive, both as a committee member and as vice-chairman and chairman throughout the entire four decades. He is a truly deserving recipient of life membership for service. Fortunately he is still with us as Immediate Past Chairman and like our former secretary of more than 30 years, Ida Piper, remains both a source of information and inspiration to us.

After a great effort by author, Murray Moorhead and a group of members headed by Wilf Faull and Ida Piper, the branch-sponsored publication "Tales of Old New Plymouth" has sold out.

Although there was only one committee meeting called, its purpose being to discuss the Sigma Report and to formulate a response from the branch, the year was a busy one. The branch's monthly meetings were well attended and featured some excellent speakers on such a diverse range of topics as travelling in Mongolia and exploring Dartmoor in Devon, to tourism in Taranaki, marine parks, the work of Age Concern, and appearing on stage in concert with the great Pavarotti.

National Councillor, Trevor Bright and Murray Moorhead attended the Annual Meeting in Wellington, and gave a comprehensive report to branch members. They were also involved in discussions with the New Plymouth port company, Westgate, and the New Plymouth District Council over the future of the local Pioneer Monument, after Westgate had intimated that it could stand in the way of future port development. Our views are that this monument to the Plymouth Company pioneers is a vital part of the city's heritage and must be kept - and that it should be kept in the port area where the original pioneers first came ashore. The branch also strongly supported the District Council's proposals for a new museum in New Plymouth.

Although we have lost a number of members through natural attrition over the year, the branch remains in good heart. We have a strong committee and faithful core of members who support our various functions, members without whom we could not exist in any form.

Trevor Bright, Branch Chairman

\*\*\*\*\*

## WAIKATO

This is our 25th Annual Report, the Branch having been formed in 1972. Our membership stands at about 125 and attendances at our meetings have been good which is very heartening. Honoured guests at our AGM in April were the National President Sir John Mowbray and Lady Mowbray. Sir John explained to members matters that are being considered at national level.

Our June meeting took the form of a mid-winter Christmas party, complete with Christmas decorations and music. Two members spoke of their ancestors arriving and settling in New Zealand and how they would have celebrated Christmas.

At our next meeting Katie Clemmens, curator of the Huntly Museum spoke of the benefits of small museums to the communities they represent.

Our annual bus trip had to be cancelled through lack of interest so our next meeting was our Christmas luncheon in November. The Ferrybank Lounge was tastefully decorated by members and a Christmas menu served. We were pleasantly entertained by a two-piece band with Christmas carols and other familiar tunes in which we all joined.

Our first meeting of the year is always a Garden Party and this year it was held at the home of Peter Mowbray's son and daughter-in-law at Karapiro. It was a lovely day and members enjoyed strolling around the beautiful grounds and relaxing by the swimming pool. Afternoon tea was served by the local Plunket group and music was provided by Peter Knowles.

My thanks to the committee for all the work they have done during the year, specially Secretary/Treasurer Peter Mowbray.

Delcie Dodds, Branch Chairwoman



Waikato members enjoying the February Garden Party



## WAIRARAPA

The year commenced with Waitangi Day being celebrated by a tour of the Masterton Park led by our local historian and horticulturalist, Mr Gareth Winter, who explained the species of trees and plants together with the history and development that has gone into the making of this outstanding asset to our town.

In March our members travelled by coach to Wellington to observe the "Festival of Birds" fireworks display. It was a stunning and unforgettable spectacle with the harbour being transformed into a scene of dazzling light and colour.

Later in March our AGM was followed by guest speaker, Mr Joe Oakes giving an address and colour slide presentation of his recent visit to the historic English city of Chester.

In April our members travelled to the Michael Fowler Centre and Town Hall to see the "World Floral Show, Florenza", a world class event.

May was an afternoon meeting at the Masterton Art Club rooms with the guest speaker, Masterton's Mayor, Mr Robert Francis, who spoke of his experiences and the challengers of his Office.

Later, on May 21st, I represented the Wairarapa Branch at the opening of the "Masterton Settlers Reserve". It is in the centre of Masterton, near the site on which the town was founded. In co-operation with the Masterton District Council, Masterton Trust Lands Trust, Wairarapa Electricity, members of the founding Dixon family and local Founders Society members, the area has been developed to encompass gardens and trees with a Victorian lantern as a main feature and two commemorative garden seats donated by the Founders Society and the Dixon family set within a paved area. It is envisaged that future development will be observed on future founding days.

At our June meeting in the Red Cross Rooms our guest speaker, Mr Brian Woodley gave an account and showed colour slides of his recent visit to Egypt.

Once again we had our winter soup luncheon in the graceful surroundings of Lansdowne House, followed by a very interesting talk by Sonya Davies, retired M.P. for Heretaunga. What a wealth of life experiences was conveyed to us.

August took us on a bus to Wellington to view the refurbished Parliament and General Assembly Library, followed by lunch at Queens wharf and Frank Kitts Park development.

In September each member brought along something old and explained its history.

In October we were conducted on a tour by Mr Frank Fyfe, Wairarapa historian, to see the classic homes of Masterton's Victoria Street. The homes are now protected under the Historic Places Trust and are being restored to their original condition.

We travelled to Pahiatua for our November meeting to see the Settlers Museum. After afternoon tea we visited a Newman Garden situated just north of Eketahuna. Our Christmas luncheon was again held at Lansdowne House with a good turnout of members. Our National President, Sir John Mowbray, together with Lady Mowbray and a visitor friend from England, were our guests. Sir John presented "For Service" badges to Miss Violet Watson, Immediate Past Chairman, Mrs Nola Jones, enrolment officer, and Mr George Barr, a past chairman, for the many years of service they have given to the Society. This was followed by Christmas carols sung by the Catholic Women's League choir.

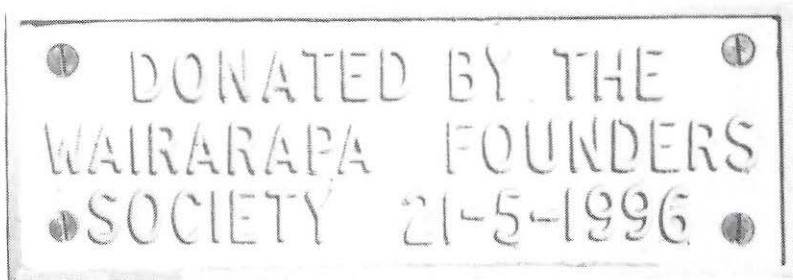
Unfortunately several of our members have passed away during the year and in particular we shall miss the cheerful smile of our committee member Donald Cameron at his raffle table.

Maurice Watson, Branch Chairman.



Photo, Lesley Keil

The Masterton Settlers Reserve. The seat on the left is the one donated by the Wairarapa Branch. On the next page is the inscription on the seat.



\*\*\*\*\*

## WHANGANUI

Membership This has increased to 127, up ten from last year. We have welcomed eleven members, most of whom were recruited by our own members. This does appear to be the most successful method of increasing membership. Since the last AGM we have had only one death.

Meetings There have been seven meetings during the year, organised and run in turn by all of our committee members. Five were held at St Peters Church hall, one at the Y.W.C.A. and the Christmas tea was at Mac and Merle Higgle's home. The speakers at our meetings were:-

March, Randal Springer who detailed the work of Elwin Dickson, a botanist in the 19th century in N.Z.

May, Arthur Bates who described his trip through Molesworth Station.

June, Mrs Doris Wallace-Thomson who spoke about her trip up the Wanganui River.

August, our treasurer, Beth Pratt, on her garden tour in Paris, Amsterdam and the United Kingdom.

September, one of our members, Tom Pittams, on his recent researches in England.

For a change, after our July luncheon, there was a demonstration of line dancing.

Bus Trips Once again we have Bill and Marjorie Purves to thank for organising our four trips away and for the information researched to add to the interest.

April, to Maxwell and Nukumar, with afternoon tea at Pakaraka Pa.

October, to two gardens at Papaiti, "Ohore", and the River Valley Tree Nursery.

November, to Pukemarama, the home of the McKelvie family in the Rangitikei district.

February 6th, to Bushy Park for lunch and Wairimu Garden, Brunswick for afternoon tea.

Other Activities undertaken by the Chairman I have written four submissions this year on behalf of the Whanganui Branch.

1. For the Wanganui District Library to the Lottery Grants Board seeking \$95,000 for microfilming the Wanganui Herald 1904-1974. This was granted.
- 2 & 3. For the Waimarie Trust to the Lottery Grants Board and to Trustbank seeking assistance for the restoration of the riverboat "Waimarie". Granted.
4. For the Founders Society to the Education Department regarding the proposed new Social Studies Curriculum.

I also attended the annual National Council meeting in Wellington and the opening of the Three Valleys Heritage Trail covering Fordell and Turakina.

Committee We are fortunate in our committee members who are very co-operative and continue to save us considerable amounts of money by telephoning members, delivering booklets, providing afternoon tea (five times this year) and so on. Some Founders branches pay for all of these services.

Joyce Mackenzie, Branch Chairman



Photo, Joyce Mackenzie

The Bushy Park homestead built in 1906. The property of 98 hectares was bequeathed to the Forest and Bird Society in 1962 by Mr G.F. Moore. It is mainly in native bush and includes what is thought to be the largest rata tree in New Zealand, 43 metres high and 3.7 metres in circumference. (See also page 30)

## WELLINGTON

This year has been one of ups and downs. We had eight meetings and all except the Garden Tour was well patronised, but the tour this year clashed with other outings and sadly was not well attended. As a consequence we lost money. I understand from people who did go it was the best there had been.

We had a great gathering at St Gerard's for an interesting afternoon. The Parliament Buildings tour, St Mary's and the Carter Observatory, the National Film Archives and Telecom Tea and Symphony were all well attended and enjoyed. The Christmas party tasting wines was most enjoyable.

At the end of the year, Patricia Schuring resigned as secretary. The committee has enjoyed working with Patricia and we thank her for her time and effort. We welcome Sandra Clarke to the secretary's position and with her, she brings historical knowledge, enthusiasm and drive. Your committee has worked hard and I thank them for work well done.

At the end of this year, I will have been your chairman for four years and I feel it is time to have someone else with new ideas and drive. I will offer myself for one more year if elected, but then I intend to resign the chairmanship.

Neil Hollebhone, Branch Chairman

\*\*\*\*\*

Some snippets of information from the Wellington Branch, researched and written by Sandra Clarke.

### Upper Hutt and Trentham (visited by the Branch in May)

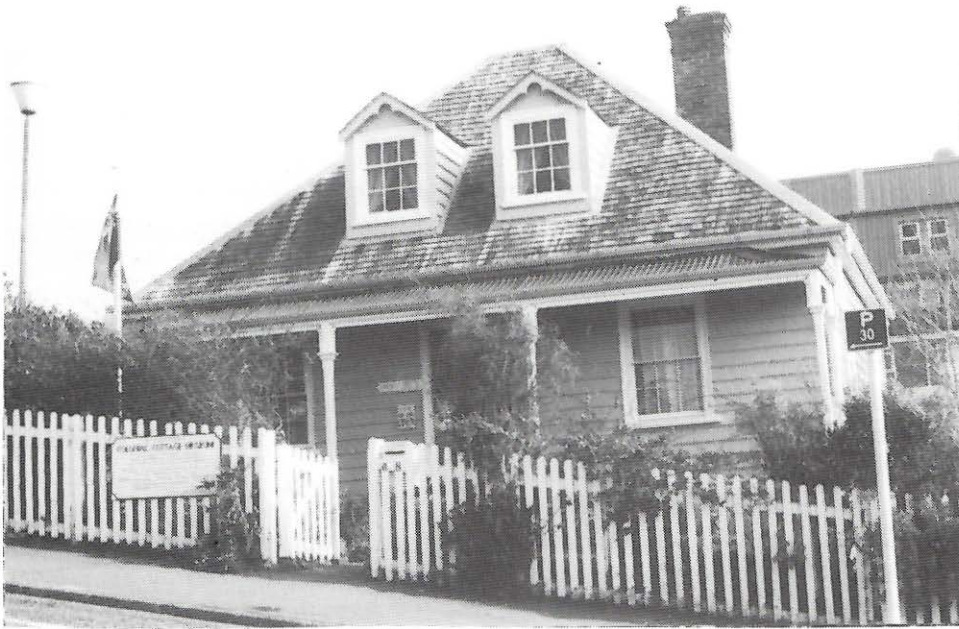
The Maori name for Upper Hutt was Whakatiki. The name Hutt was taken from Sir William Hutt (1801-82) one-time Chairman of the N.Z. Company. In 1861 a blockhouse and school were erected in the area. Upper Hutt Borough was formed in 1926 and the first Mayor was Mr A.J. McCurdy.

Trentham was settled a little earlier by Richard Barton who arrived first in the "Oriental" but returned on a visit to England and was presented by his previous employer, the Duke of Sutherland, with the 100 acres that the Duke had drawn as shareholder in the N.Z. Company. The name Trentham was given to the block after the Duke's seat in Staffordshire.

Visit by the Wellington Branch to the Mount Street Cemetery and the Colonial Cottage Museum

The Mount Street Cemetery was established about the same period as the Bolton Street Cemetery. It was maintained by the Catholic Church for the parish covering all of South Wellington. The land was part of a Karori Rural Section. When Melrose Borough was formed in 1888, it was claimed as the borough cemetery.

The Colonial Cottage at 68 Nairn Street was built in 1858 by William Wallis. About 20 years ago when the house passed out of family ownership, a group within our own Society called the Young Founders was active in establishing the house as the base for a local Colonial Museum. A photographic display recently prepared by the Colonial Cottage Museum Committee includes photos of the area in the 1870s, including the large home called Kinoull built by John Kirkcaldie for his bride at the top of Thompson Street. The house was burnt down in the 1920s.



Photo, Joyce Mackenzie

The Colonial Cottage Museum in Nairn Street.